

Music Theory III

Assignment 6 - due Feb. 18th at the beginning of class

Name _____

1. Supply the correct key and RN analysis for the following figured bass examples. Then add the three upper voices in SATB spacing.

Two figured bass examples in 4/4 time. The first example is in B-flat major and contains the figures 6, $\flat 6$ $\flat 3$, and $\flat 7$ $\flat 3$. The second example is in D major and contains the figures 6, 6, $\flat 6$, 6, and 5 \sharp .

2. Supply the correct key and roman numerals where indicated on the score.

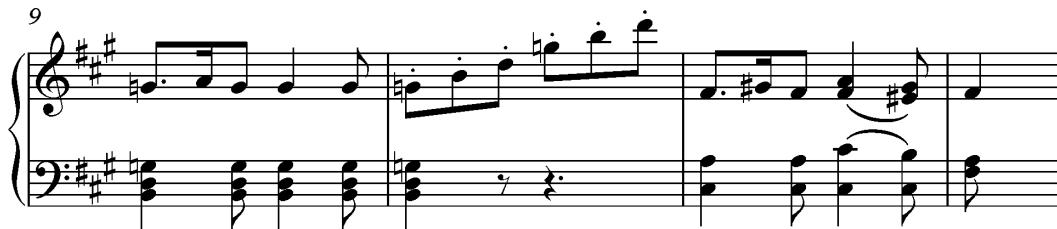
First system of a musical score. The vocal line has the lyrics "er hält in Ar - men das äch - zen - de Kind,". The piano accompaniment features a steady bass line and chords. Dynamics include *ff* and triplets.

_____ : _____

Second system of a musical score. The vocal line has the lyrics "er - reicht den Hof mit Müh' und". The piano accompaniment features a steady bass line and chords. Dynamics include *fz*.

Third system of a musical score. The vocal line has the lyrics "Noth; in sei-nen Ar-men das Kind war todt.". The piano accompaniment features a steady bass line and chords. Dynamics include *fp*, *pp*, *p*, and *f*.

3. Supply the correct key and a RN analysis for the following excerpt. Then answer the question below.



The authors of your textbook consider this excerpt a three-phase period with each phrase being four measures long. Do you agree or disagree with this assessment. Using evidence in the music (citing measure numbers, parameters, etc.), explain what you think the phrase structure is.