









Intensive Part-Writing and Analysis
Assignment #2 – due Friday, Sep. 7th, 10:00 am

Name:

1. Read pages 10-15 and 30-36 in GRIT.
2. Fill in the blanks in the following chart.

	Beat and Meter Type	Beat Note	Division of Beat	Time Signature
1.				C
2.	Simple Triple			
3.	Simple Duple			
4.				2
5.	Simple Quadruple			

3. Fill in the blanks in the following chart.

	Beat and Meter Type	Beat Note	Division of Beat	Time Signature
1.	Compound Triple			
2.				6 16
3.				12
4.	Compound Duple			
5.				9

4. In your own words, explain the difference between simple and compound meter.

over...

5. Without changing the way the music sounds, rewrite each of the following examples to clarify beat placement within the given meter. This may involve rebeaming or breaking longer note values into tied shorter note values.

A.



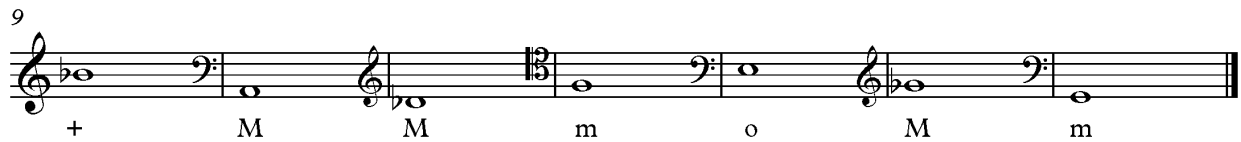
B.



C.



6. Notate root position triads given the triad root and type.



7. Identify the type of the following 7th chords (i.e., Mm7, M7, etc.). Write your answers under each 7th chord.



8. Supply the chord symbol, chord root and type for each indicated chords in this example.

Chord
Symbol: _____



Chord
Root: _____

Chord
Type: _____